



Caro Point, 5 Gatliff Road  
London SW1W

GARTON JONES.COM



GARTON JONES  
LONDON

Caro Point, 5 Gatliff Road  
London, SW1W

GARTON JONES.COM

8 Gatliff Road  
Grosvenor  
Waterside  
Chelsea  
London  
SW1W 8DP

Sales +44 (0) 20 7730 5007  
gws@gartonjones.com  
www.gartonjones.com

## £700 Per Week

A ONE DOUBLE BEDROOM apartment to rent of approx. 540 sq.ft (50 sq.m) in Caro Point, part of the popular Grosvenor Waterside development in Chelsea. This FURNISHED property further benefits from an open plan reception room with full width floor to ceiling windows with PRIVATE BALCONY. There is a kitchen with Miele appliances, a luxury bathroom suite, dark wood flooring, a utility cupboard with an AEG washing dryer and good storage including fitted wardrobes. 24 HOUR CONCIERGE, GYM and SPA. On-site Sainsbury's Local, coffee shop and private kids club. SLOANE SQUARE and VICTORIA station with Gatwick Express are within walking distance.

Available via Garton Jones' on-site office at Grosvenor Waterside (underneath Bramah House).

Please note furniture may differ to that shown in the current photos.

12 month minimum term. 5 week deposit required.

EPC Rating: B (81)

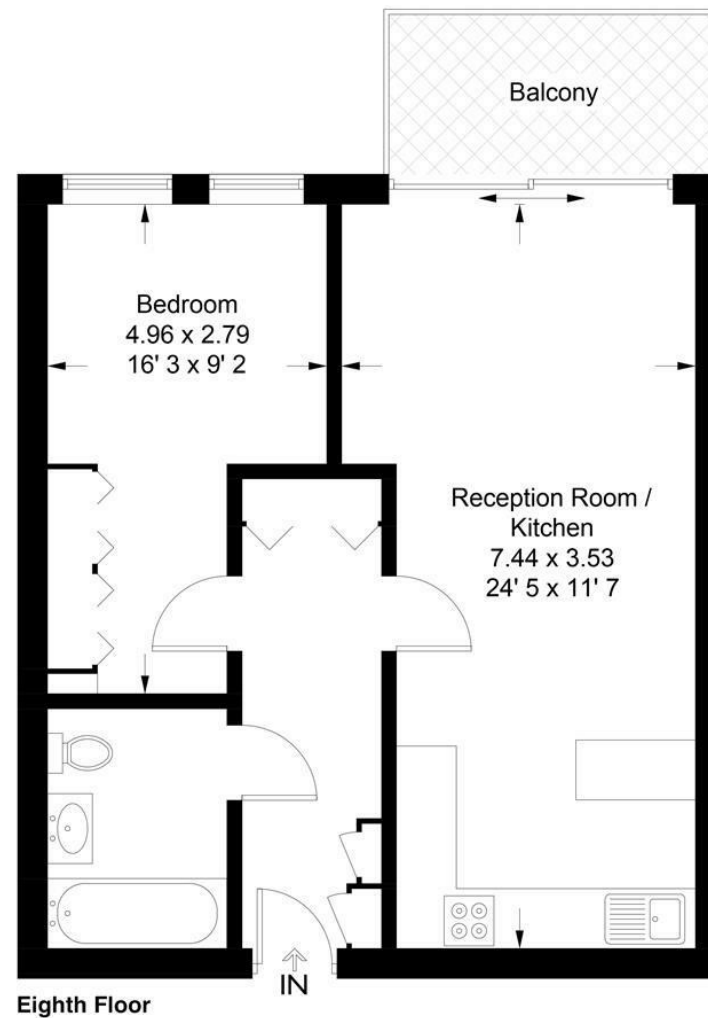
EPC certificate available on request.

- 540 Sq.ft (50 Sq.m)
- One Double Bedroom
- Open Plan Reception
- Kitchen with Miele Appliances
- Luxury Bathroom Suite
- 24 Hour Concierge
- Private Balcony
- Access to On-Site Gym and Spa Facilities
- On-Site Sainsbury's, Coffee Shop and Private Kids' Club
- Close to Victoria and Sloane Square Stations



**Caro Point**

Approximate Gross Internal Area = 544 sq ft / 50.6 sq m



**Eighth Floor**

Not to scale, for guidance only and must not be relied upon as a statement of fact  
All measurements and areas are approximate only and have been prepared in  
accordance with the current edition of the RICS Code of Measuring Practice



